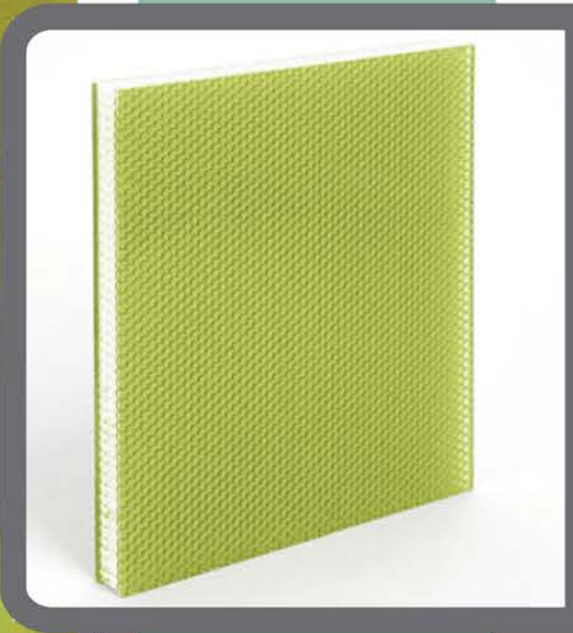


HUNTER DOUGLAS
INTERIOR ROLLER
SHADES PROVIDE
CONTROL FOR
BOTH DAYLIGHT/GLARE
AND SOLAR GAIN

THE OFFICE BENEFITS FROM AMPLE
ACCESS TO DAYLIGHT. GIVEN THE
STRENGTH OF SAN ANTONIO'S
SOUTHERN SUN EXPOSURE, SUN LIGHT
CONTROL IS ESSENTIAL.



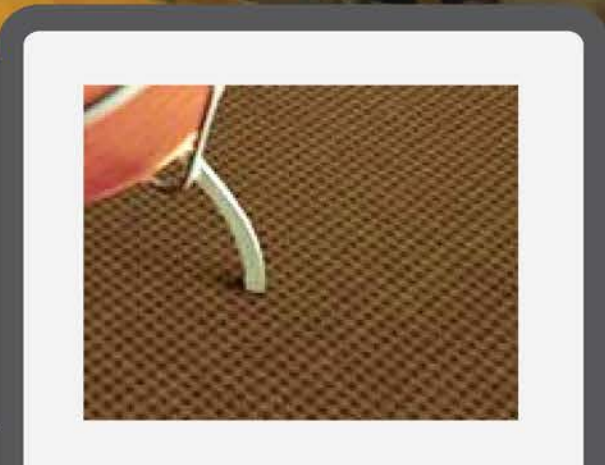
3FORM STRUTTURA RESIN
IS A LIGHTWEIGHT
MATERIAL MADE WITH
25% PRE-CONSUMER
RECYCLED CONTENT

FORMED INTO
CUSTOM PARTITIONS,
IT DIVIDES THE OPEN
OFFICE WHILE
ALLOWING DAYLIGHT TO
PASS THROUGH IT AND
PENETRATE THE SPACE
THEREFORE REDUCING
THE NEED FOR ARTIFICIAL
LIGHTING.

PERSONAL TASK
LIGHTING ALLOWS
THE USERS TO
CUSTOMIZE THEIR WORK SPACE
TO BETTER SUIT THEIR
INDIVIDUAL NEEDS, INCREASING
ENERGY EFFICIENCY.



THE BROADLOOM CARPET FROM KARASTAN
MEETS NSF 140 - THE FIRST BUILDINGS ANSI
APPROVED, MULTI-ATTRIBUTE SUSTAINABLE
CARPET STANDARD, AS WELL AS CRI GREEN
LABEL PLUS.

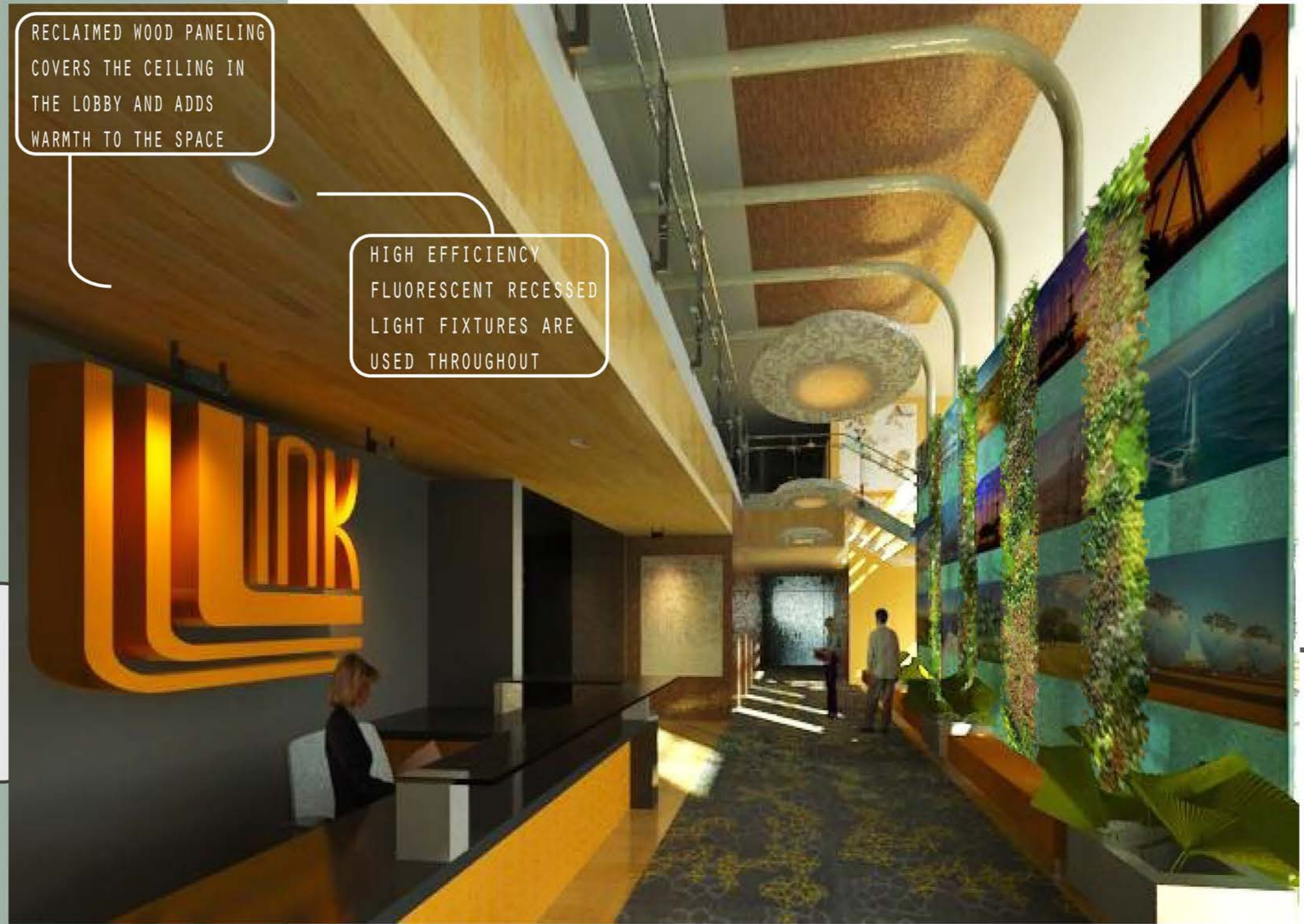


LINK OIL&GAS SAN ANTONIO

THE LOBBY AT LINK IS THE SPINAL CORD OF THE COMPANY: IT SERVES AS THE MAIN CIRCULATION PATH CONNECTING THE DIFFERENT STAFF GROUPS, AS WELL AS THE PUBLIC.

RECLAIMED WOOD PANELING COVERS THE CEILING IN THE LOBBY AND ADDS WARMTH TO THE SPACE

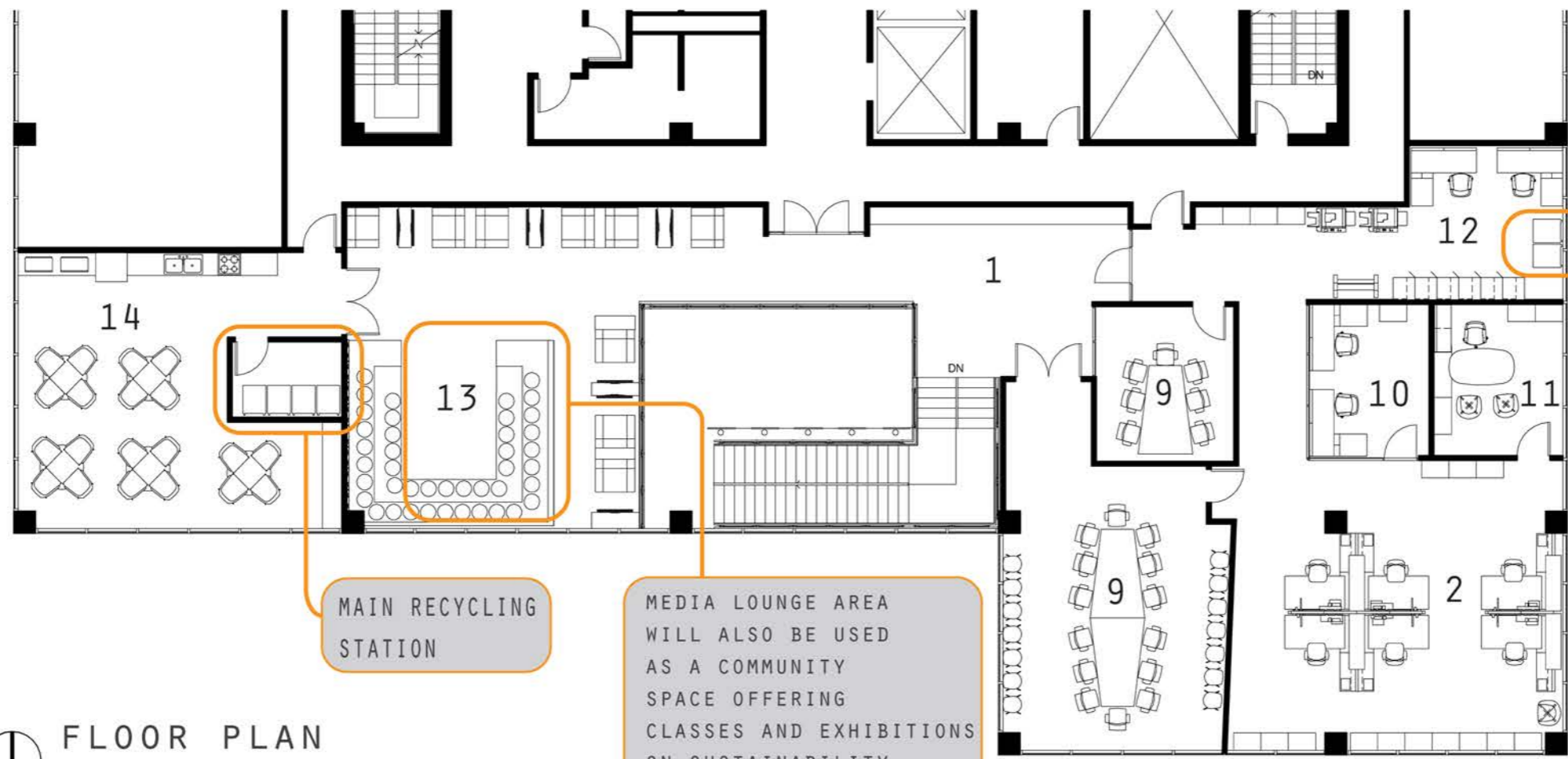
HIGH EFFICIENCY FLUORESCENT RECESSED LIGHT FIXTURES ARE USED THROUGHOUT



THE SCREEN IS BOTH A DISPLAY WALL FOR THE COMPANY AND A GREEN WALL. IT BLOCKS THE HARSH SOUTHERN SUN FROM THE RECEPTION AREA, WHILE LETTING LIGHT PASS SOFTLY THROUGH THE VEGETATION AND TRANSLUCENT PANELS.



- 1. LOBBY
- 2. OPEN OFFICE
- 3. FILE
- 4. COPY
- 5. STORAGE
- 6. SHOWER ROOM
- 7. EXECUTIVE OFFICE
- 8. EXECUTIVE ASSISTANT
- 9. CONFERENCE ROOM
- 10. IT
- 11. HR
- 12. SUPPLY ROOM
- 13. MEDIA LOUNGE
- 14. BREAK ROOM

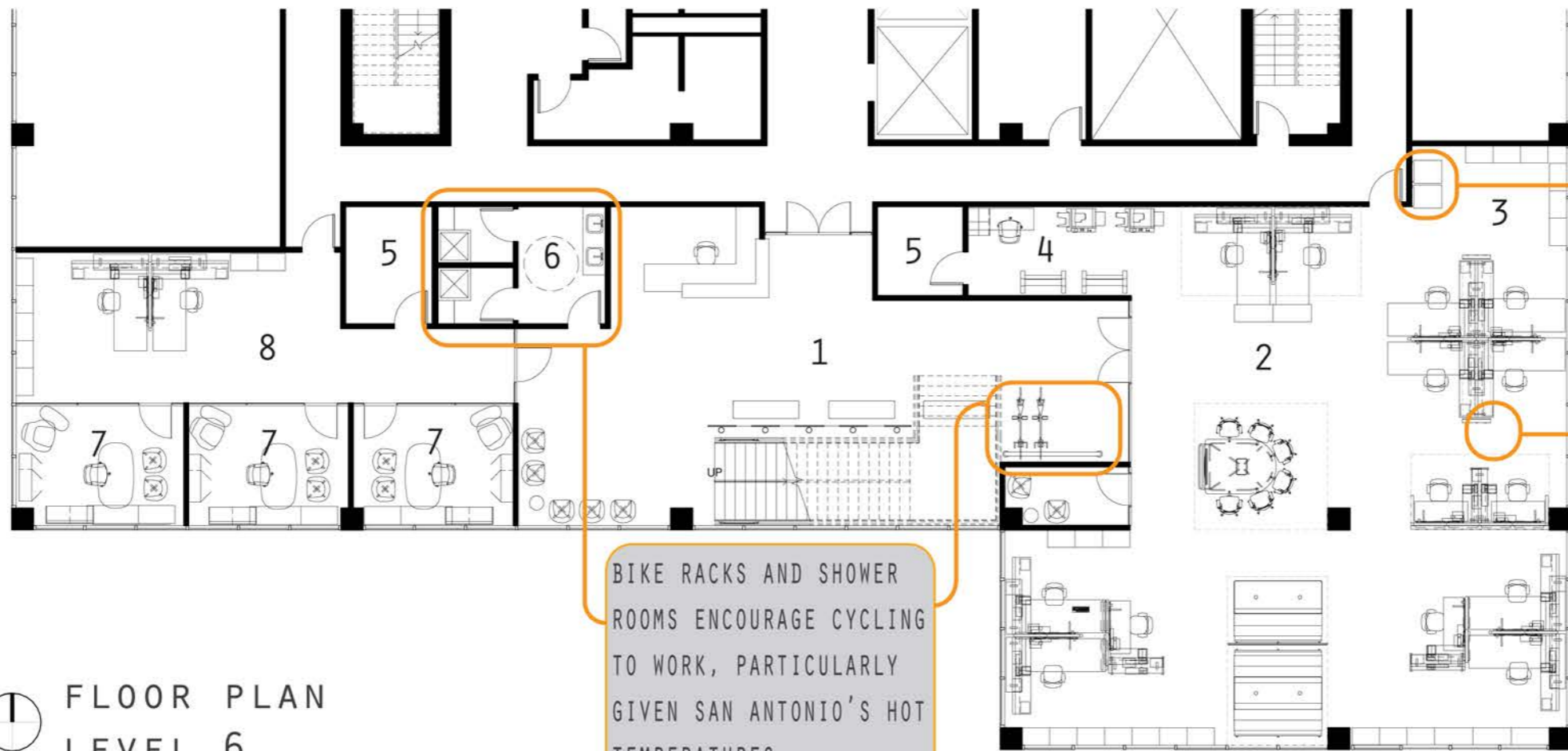


FLOOR PLAN LEVEL 7

MAIN RECYCLING STATION

MEDIA LOUNGE AREA WILL ALSO BE USED AS A COMMUNITY SPACE OFFERING CLASSES AND EXHIBITIONS ON SUSTAINABILITY AND GREEN LIVING

PAPER RECYCLING STATIONS ARE CONVENIENTLY LOCATED AROUND THE OFFICE



FLOOR PLAN LEVEL 6

BIKE RACKS AND SHOWER ROOMS ENCOURAGE CYCLING TO WORK, PARTICULARLY GIVEN SAN ANTONIO'S HOT TEMPERATURES

AN OPEN OFFICE ALLOWS ALL WORKERS TO ENJOY THE PHYSIOLOGICAL BENEFITS OF NATURAL LIGHT WHILE AT THE SAME TIME REDUCING THE NEED FOR ARTIFICIAL LIGHT



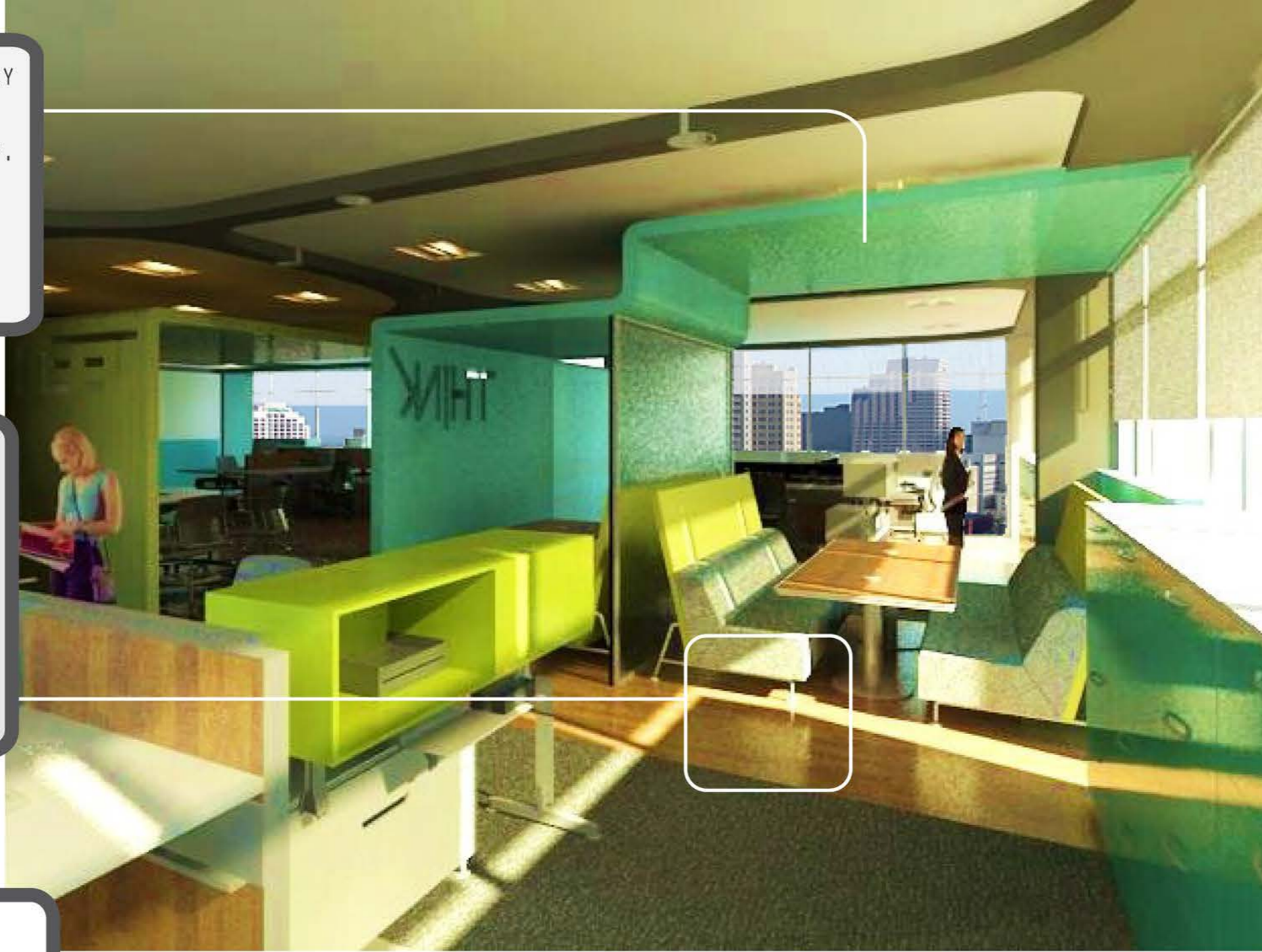
COLLABORATIVE SPACES ARE CENTRALLY LOCATED TO ENCOURAGE INTERACTION BETWEEN DIFFERENT GROUPS OF STAFF. CREATIVE THINKING AND INNOVATIVE SOLUTIONS ARE PROMOTED IN A COMPANY DEALING WITH THE ENERGY CHALLENGES OF OUR TIME



FSC CERTIFIED WOOD FLOORING AND SURFACES



STEELCASE WORKSTATIONS KEEP THE PANEL HEIGHTS LOW ENOUGH AS TO MAINTAIN AN OPEN OFFICE LANDSCAPE. THEY ARE ALSO CRADLE TO CRADLE CERTIFIED, AND ALL UPHOLSTERY FABRICS CONTAIN RECYCLED CONTENT



A CONTROL SYSTEM THAT MEASURES DAYLIGHT LEVELS AND ADJUSTS ARTIFICIAL FIXTURES ACCORDINGLY IS IMPLEMENTED. ADDITIONALLY THE WINDOW TREATMENT AND TASK LIGHTING ARE CONTROLLED BY THE INDIVIDUAL. IT IS PROVEN THAT THE ABILITY TO CUSTOMIZE ONE'S WORKSPACE INCREASES BOTH EFFICIENCY AND PRODUCTIVITY